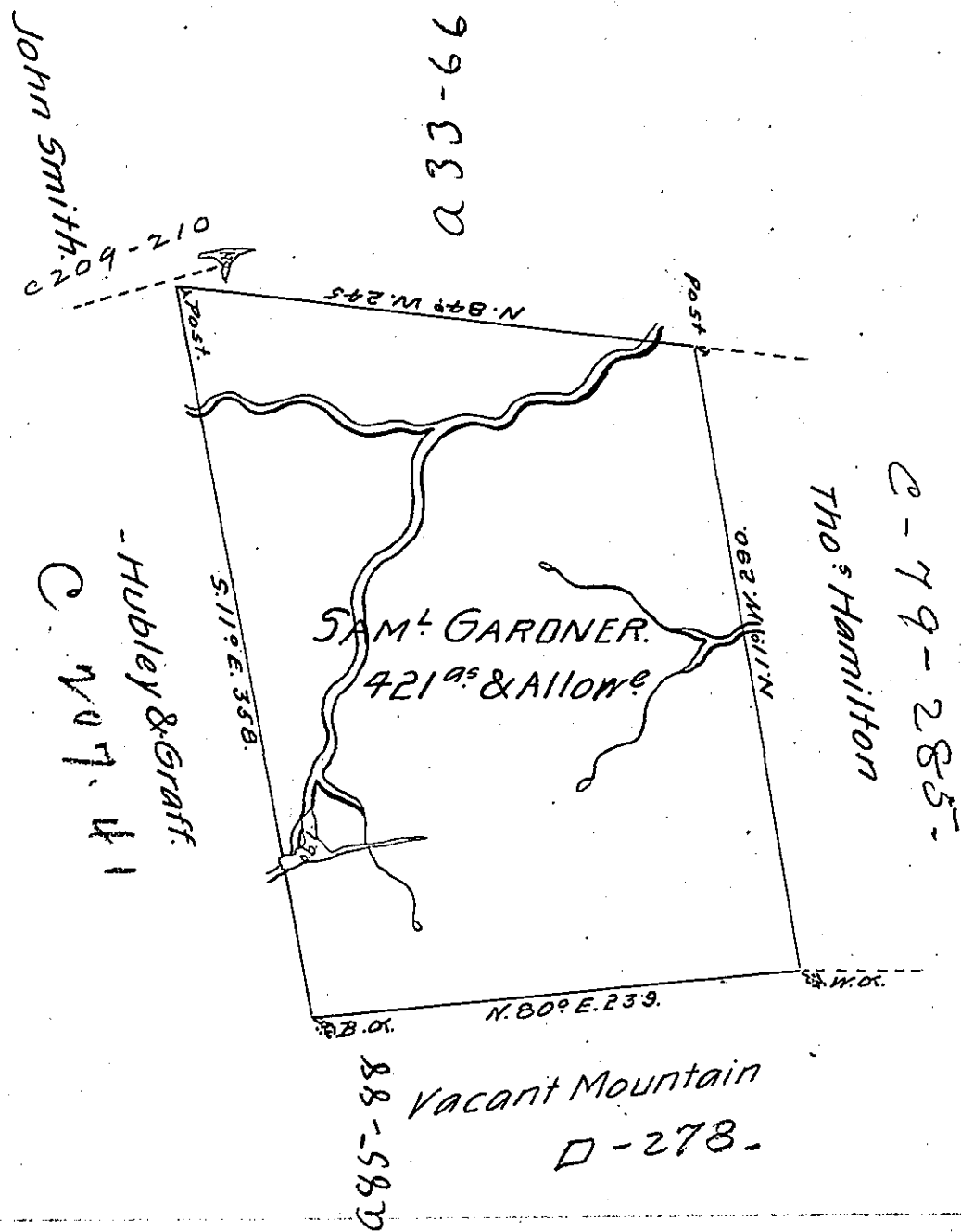


✓



A draught of a tract of Land Called _____ Situate on the Waters of Nescopeck Creek about a Mile & 1/2 from the N. East Branch of Susque^a River Joining Land of Hubley & Graff & others in Catawissey Township Northum^d County Containing four Hundred & twenty one Acres & Allowance of Six p. Cent for roads &c. Surveyed for Sam'l Gardner the 14th Day of Nov^r 1787 in Pursuance of a Warrant Dated the 25th Day of May 1785.

by W^m Gray D. S.

To John Lukens Esq^r.
Surr^r. Gen^l.

IN TESTIMONY that the above is a copy of the original remaining on file in the Department of Internal Affairs of Pennsylvania, made conformably to an Act of Assembly approved the 16th day of February, 1833, I have hereunto set my Hand and caused the Seal of said Department to be affixed at Harrisburg, this twenty-second day of November 1904.

George D. Perryman
Secretary of Internal Affairs.